

Application of Dianel bioresonance machines for effective implementation of the holistic approach in Complementary Medicine

Center of Information Technologies Nelian LLC
Authors: M.d. Marzoyeva M.S., Ivanov P.U.
Moscow, 30.08.2017



Оглавление

Introduction.....	2
Formation of the integrative (holistic) medicine.....	2
Use pattern of Dianel devices in integrative medicine	4
Step 1.....	4
Step 2.....	4
Step 3.....	5
Example	5
Step 1. Hemoscanning of live blood with Digital Microscope.....	5
Stage 2. Psychophysical testing using the Dianel device with Dianel-Ion software.....	6
Stage 3. Bioresonance Survey on the Dianel machine equipped with Dianel-2 software.....	7
Conclusion	10

Introduction

In the modern world, a growing number of people are beginning to follow the concept of a healthy lifestyle, called Wellness.

"Wellness is generally used to mean a state beyond absence of illness but rather aims to optimize well-being", which is based on the combination of both physical and psychological aspects of health, proper nutrition, adequate physical activity and rejection of bad health habits.

[A quotation from Wikipedia](#)

The main goal of wellness is health support, prevention of diseases and external and internal signs of aging by applying physical and psychological methods of effect normalization.

Please note that even widespread WELLNESS uses a Holistic (multifaceted, multifactorial) approach to the treatment and prevention of diseases.

The term "holistic" comes from the Greek word "holon", meaning "all, whole, entire" in the translation. Within this framework, the consideration of a person from the perspective of interconnectedness and interdependence of all organs and body systems is central in the philosophy and methodology of holistic medicine, and the basis of the holistic approach is the increase in human health potential.

THE ORGAN SYSTEMS IN HUMAN BODY INTERRELATED IN ACCORDANCE WITH THE HOLISTIC APPROACH:

1. DIGESTIVE SYSTEM
2. RESPIRATORY SYSTEM
3. REPRODUCTIVE SYSTEM
4. URINARY SYSTEM
5. CARDIOVASCULAR SYSTEM
6. IMMUNE SYSTEM
7. LYMPHATIC SYSTEM
8. ENDOCRINE SYSTEM
9. ENDOCRINE SYSTEM
10. SENSORY SYSTEM
11. MUSCULO-SKELETAL SYSTEM
12. MICROSCOPIC OBJECTS
13. BACTERIA
14. PROTISTS
15. VIRUSES
16. FUNGI
17. HELMINTS
18. URINARY INFECTIONS
19. GENETICS

Being an integral whole, a person, his functional state, his health, is integrated from the interaction of internal factors such as anatomical features, heredity, physiological and biochemical nuances, nervous and regulatory systems, mind; and external factors such as social environment, external positive and aggressive impact mechanisms.

Thus, only the biological balance between the functional and psychological states of a person is equivalent to the health. A normal (i.e. healthy) balance corresponds to homeostasis.

Dianel complexes assess the functional state of organs and systems, measure homeostasis with a gradation of the levels by four intervals, as well as assess the patient's psychophysiological state, thereby covering all factors of the current holistic health of a person!

Formation of the integrative (holistic) medicine

In the evolution of the medicine, five positions are traced, which can be formulated in the form of the doctrine of the modern integrative (or holistic) medicine:

1. Synthesis of medicine, theology, philosophy and sociology.
2. Synthesis of medicine and physical and mathematical sciences (mathematics, cybernetics, physics, chemistry, astronomy).
3. Synthesis of biomedical and clinical sciences.
4. Synthesis of traditional and scientific medicine.
5. Synthesis of traditional and new medical technologies.

At the confluence of these trends, several decades ago approaches to holistic treatment in the form of integrative and complementary medicine were formed.

Dianel bioresonance testing and therapy complexes with complete biological feedback due to the combination of possibilities are the best instruments for the purposes of integrative and complementary medicine, permit the most effective implementation of the holistic (multifaceted) approach to the patient's health. The inclusion of Dianel bioresonance devices in the list of the ones used in evidence-based medicine, integrative medicine, holistic medicine is, first of all, due to their effectiveness in detecting diseases at early stages, determining chronic pathologies, and their capability to dynamically monitor the overall health without expensive clinical studies.

One of the most significant advantages of the bioresonance testing method implemented in Dianel devices is its capability of assessing the psychosomatic component of the pathological process, as well as high reliability and success in the treatment of chronic helminthiases. At the same time, laboratory diagnostics of helminthiases is rather problematic, especially since standard analyses for worm eggs do not reveal their presence, and serological tests have a high percentage of false positive results. With increasing frequency doctors of different specialties are concerned with the question of the impact of helminths, their mature forms and eggs and larvae circulating in the blood, on rheological properties of blood, on the tendency to thrombosis and, accordingly, the formation of so-called "diseases of civilization".

Especially effective and economically advantageous is the combination of Dianel bioresonance testing with other methods permitting the reliable measurement of certain indicators and confirmation of its reliability and effectiveness in real time.

Since 1998 LLC [NELIAN](#) Information Technology Center is engaged in the development and production of the VISUAL MEDICAL DIAGNOSTIC SYSTEMS equipped with the Dianel application meeting the world standards and used both in traditional medicine and even more in medical centers that use the principles of integrative medicine. Dianel's equipment has been widely used by consumers in Russia and abroad since 1998. During these years, tremendous scientific and practical material was received which gave an impulse to further improvement of not only individual methods, but to the appropriateness of their combined use.

The main types of equipment manufactured by the Nelian Information Technology Center are:

- 1) [Dianel®](#) hardware and software complex for bioresonance diagnostics and therapy of human health with complete biological feedback;
- 2) [Dianel®-iON](#) complex for [psychophysiological testing](#), stress and depression degree assessment, psychological testing with hardware handshake of results based on the measured SGR data.
- 3) [Microscopes for Hemaview live blood analysis](#) - microscopy of live (native) blood, consisting of digital trinocular dark field microscopes equipped with both light and dark fields under Visualisation of [Dianel-Micro imaging and measurement system](#), high-speed high-resolution digital cameras for a microscope.

The Dianel hardware and software complex (models [Dianel-5121](#), [Dianel-5122](#)) is the main tool to implement a holistic approach to the patient's health. The Dianel device is equipped with full biologically active feedback and used as a means of complex diagnostics and therapy using computer bioresonance nonlinear NLS testing of a human body.

In [Dianel® devices](#) the possibility of the following is provided:

- Primary diagnostics of pathological processes and diseases, detection of diseases even at the preclinical stage;
- Imaging of the functional state of each organ with localization of the focus area, with a convenient indicator of homeostasis, confirmation of the data obtained at the chromosomal and biochemical level;
- Determination of the underlying disease which is the key to a successful program of recovery, treatment and prevention;
- Energy-informational frequency action (bioresonance therapy) for the normalization of organs and tissues

- Antiparasitic, antifungal, antiviral therapy with energy-informational frequency action and simultaneous imaging of the action effectiveness;
- Production of energy-informational products (infoceutics) of any drugs, as well as inverted spectronozodes of pathological processes, infectious and parasitic agents for adjusting refractory pathologies and addictions, including smoking, antidepressant drug dependence, etc.,
- Selection of various health products, homeopathy and dietary supplements by bioresonance testing method;
- The possibility to assess changes in patient's aura, chakras and meridians.

The results obtained in diagnosis and therapy on the Danel hardware and software complex can be assessed using a comparative analysis of the Danel application, or by comparing the results of the skin galvanic reaction in the Danel®-iON application, and if the examination is started with psychoemotional testing and correction, you can get more valuable data in diagnostic and treatment context.

Combined use of hemoscanning (equal to live blood analysis) [Danel-Micro](#) expands the diagnostic capabilities of the [Danel bioresonance device](#), makes a more vivid assessment of the effectiveness of treatment in dynamics.

Hemoscanning, in other words - live blood analysis, using the Danel-Micro software gives a picture of the patient's blood condition in real time. It is quite telling to use this technique to determine whether the patient has helminths, fungi, protozoa, bacteria and viruses, and disorders in the digestive system. You can use this technique both before bioresonance testing to specify the types of helminths or protozoa circulating in blood, and after to see the effect of the conducted energy-informational frequency therapy ([EIF-therapy](#)).

Use pattern of Danel devices in integrative medicine

One of the most optimal use patterns for Danel devices used in most centers of integrative medicine is the following:

Step 1.

The patient undergoes [hemoscanning \(live blood analysis\)](#) on a [biological trinocular microscope with a connected high-resolution digital camera of 3 Mp and higher](#) and a high frame rate per second (from 20 fps at the maximum resolution). Due to the high resolution of the digital camera, it becomes possible to assess the overall health, including:

- Non-quantitative levels of saturation with oxygen, water and nutrients (standard, decrease);
- Morphological characteristics of erythrocytes (shape, size, colour intensity), which can be used to judge the presence of anaemia and some somatic diseases;
- State of leukocytes, and by their functional activity – of the whole immune systems;
- State of the coagulation system (the tendency to thrombosis and the prognosis of relate complications);
- Plasma purity in terms of the presence of biological objects (bacteria, fungi, other microorganisms without their identification);
- Indirect signs of inflammatory processes, including hidden ones - identification of markers of cardiovascular diseases;
- Signs of intoxication syndrome;
- Functional reserves of a body (adaptive reserves and self-recovery capability);

Step 2.

After hemoscanning the patient undergoes [psychophysiological testing](#) using a Danel device to assess the overall psycho-emotional status. The [Danel hardware and software complex](#) combines the possibility to carry out psychophysiological testing and Danel bioresonance diagnostics with EIF-therapy, which simplifies the complete physical examination, in one device.

[Psychophysiological testing using the Danel device under the control of the Danel-Ion](#) application works based on the registration of the skin galvanic reaction with the real-time SGR signal, in which the

patient's reaction to various stimuli, performance capability, a person's stress resistance, his ability to learn and other psychoemotional state measures. In Dianel-Ion, SGR is recorded on two channels with two hands, which makes it possible to assess hemispheric asymmetry. Just 3-minute testing of the patient gives an accurate interpretation of his psychophysiological state and psychoemotional status. Deeper and longer studies are also possible.

The hemispheric asymmetry measures are especially valuable in various cognitive disorders (memory and attention disorders), with age involuntional dementias, in the preparation of left-handed children for school, in the correction of psychosomatic pathologies, in the treatment of stuttering, hyperactivity, etc. The importance of interhemispheric asymmetry assessment more and more widespread confirmation in the general neurological and psychotherapeutic practice. Using the Dianel device with the help of Dianel-Ion it is possible to correct the psychoemotional state using the biological feedback method.

Combined use of the Dianel-5122 (or Dianel-5121) devices equipped with bioresonance and psychophysiological modules helps not only prepare the patient for a more correct bioresonance test, but also conduct a deeper assessment of the health status, identify the causes of disorders, and then select the most effective therapeutic measures and assess their effectiveness.

Step 3.

The final and most important stage, in which all the scattered bits of information about the patient's health status are holistically aggregated, is bioresonance diagnostics using the Dianel device with the Dianel-2 software.

In the process of bioresonance diagnostics, it is already possible to concretize the data obtained in the hemoscanning and psychoemotional testing, i.e. clarify what pathological conditions and diagnoses correspond to the previously recorded changes in blood, what forms of parasites, protozoa, fungi we saw in blood plasma. If in the process of psychophysiological testing using the Dianel device with the Dianel-Ion application there were deviations in the patient's psychoemotional state recorded, then after the bioresonance testing it becomes obvious whether they correspond to the formed pathological states by the type of neurasthenia or asthenoneurotic syndrome or whether they are caused by a general decrease in the adaptive resources of a body, segmental inertia disorders or balance disorders of sex hormones or thyroid hormones.

If necessary, after the diagnostics EIF-therapy is carried out, designed not only to improve the functional state of body organs and systems, but using the destructor function, EIF-therapy suppresses the vital activity of pathogenic bacteria, fungi, helminths, protozoa or viruses.

Case follow-up of the patient's condition and comparative analysis can be carried out by any method, using either the Dianel-2 software, or Dianel-Ion and Dianel-Micro, or combining them.

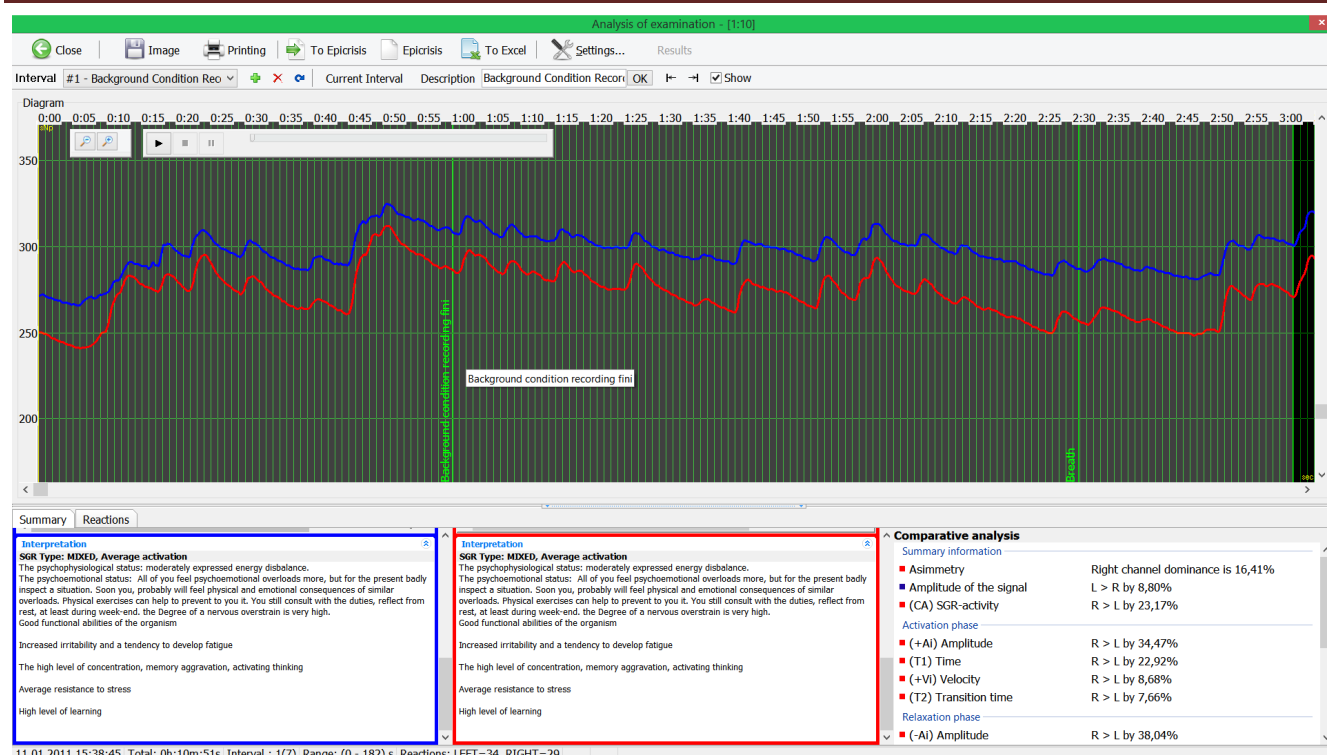
Example

Here is an example of examination and therapy of a group of 37 women aged 58-65 with complaints of pain in the side to the right and intolerance to greasy food.

Step 1. Hemoscanning of live blood with Digital Microscope.

Parasitic forms corresponding to the trematode class are revealed in blood plasma, which is a condition requiring serious antiparasitic treatment. Save photos and video files confirming the presence of parasitic forms by [digital microscope with the Dianel-Micro visualization system](#).

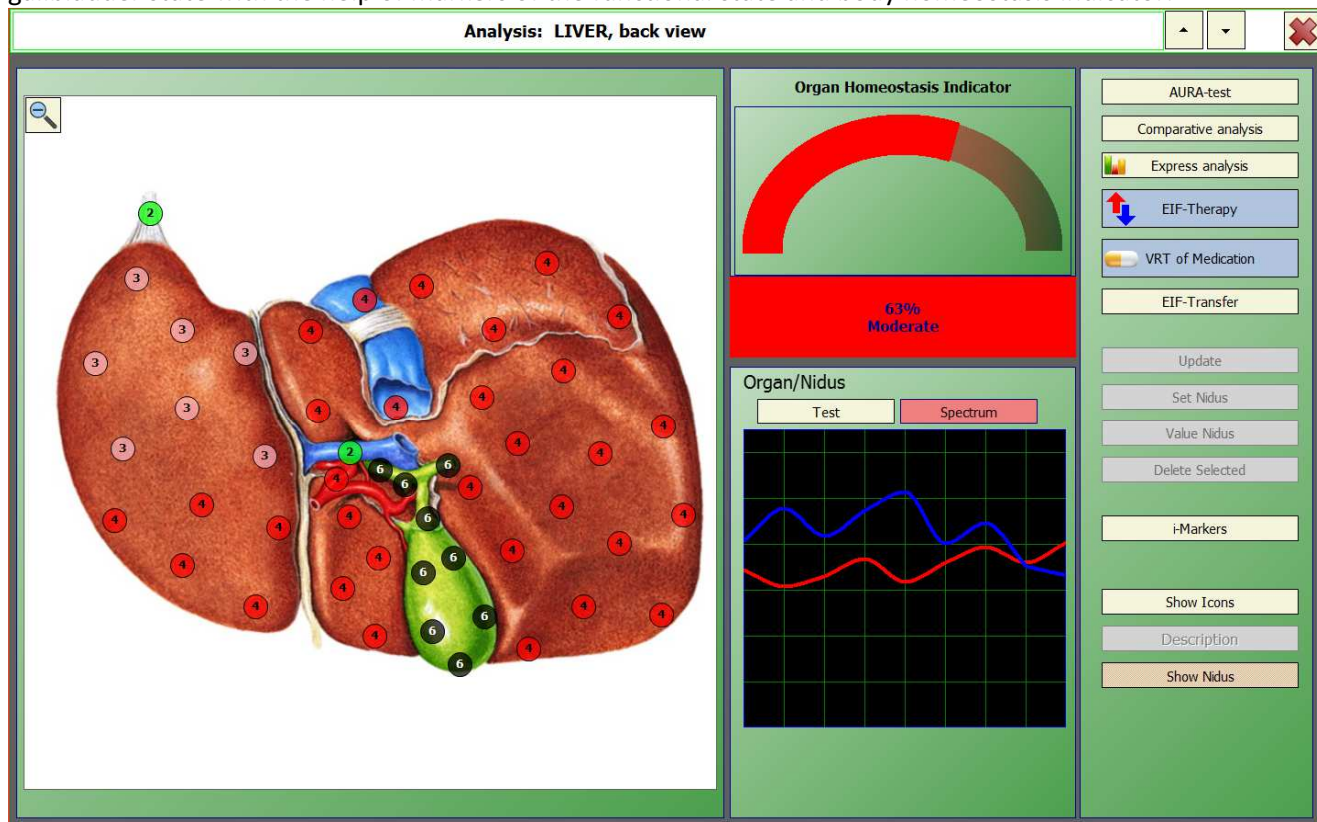
Make [Psychophysical testing using the Danel device](#) with Danel-Ion software. Short test of 2 channels
GSR background recording within 3 minutes only.



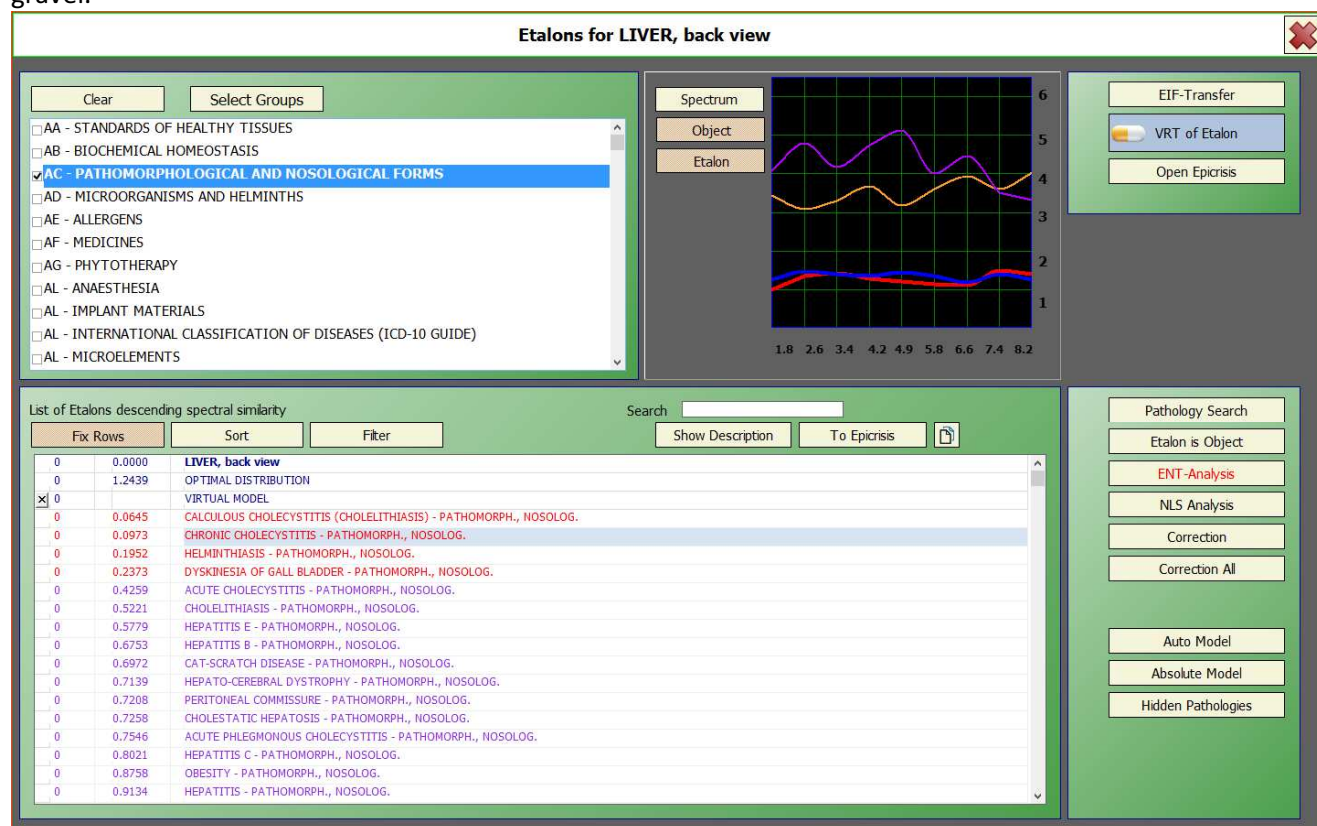
We assess the patient's condition. The analysis of psychoemotional testing gives an opinion on the maladaptation of the utilization of functional resources of the body with the tendency to fatigue development.

Stage 3. Bioresonance Survey on the Dianel machine equipped with Dianel-2 software.

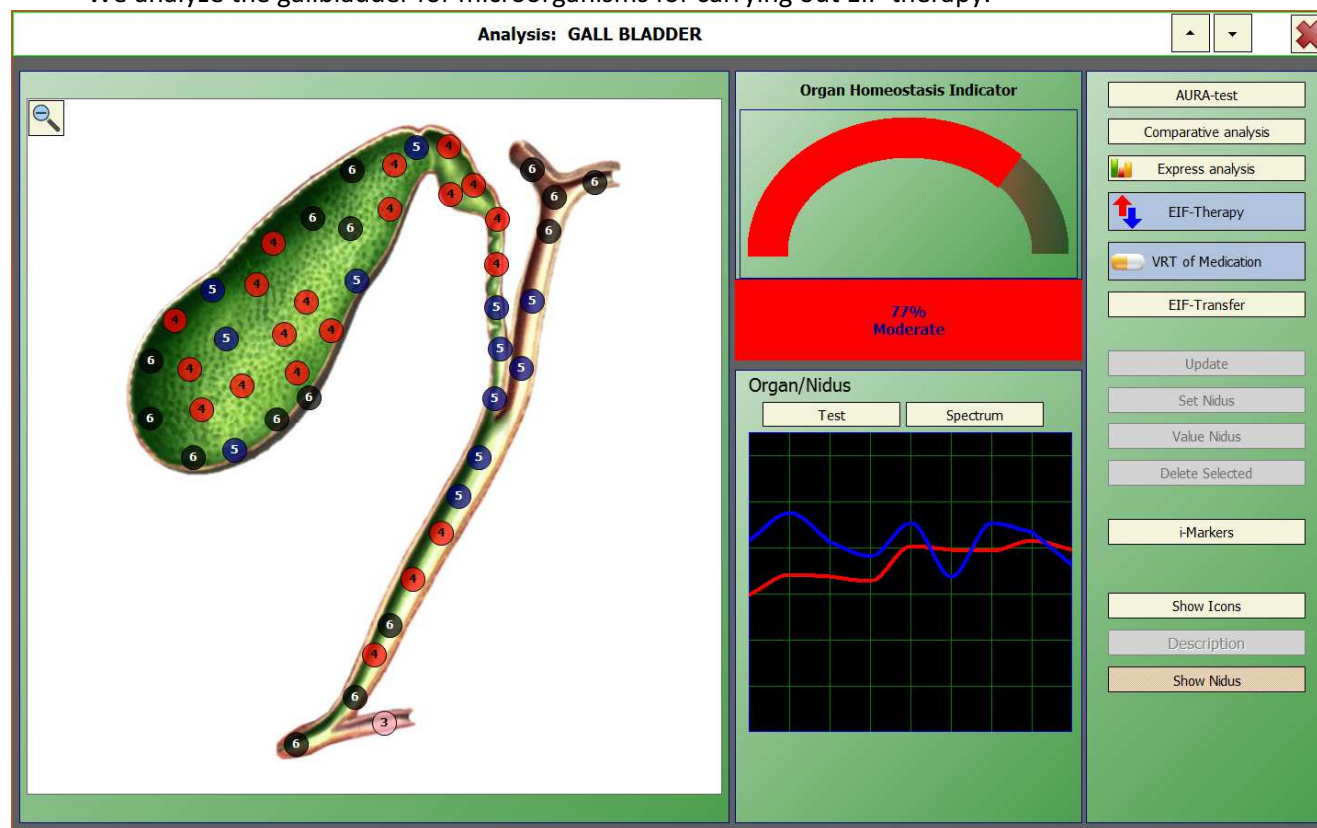
[Dianel machine equipped with Dianel-2 software](#) permits the imaging of the functional liver and gallbladder state with the help of markers of the functional state and body homeostasis indicator.



Chronic cholecystitis with a spectral similarity coefficient of 0.0165 corresponds to the state of the pathological process aggravation. The presence of calculous cholecystitis should be clarified, since the state of helminthic invasion and, accordingly, inspissation of the bile, can be interpreted as a sign of the presence of gravel.



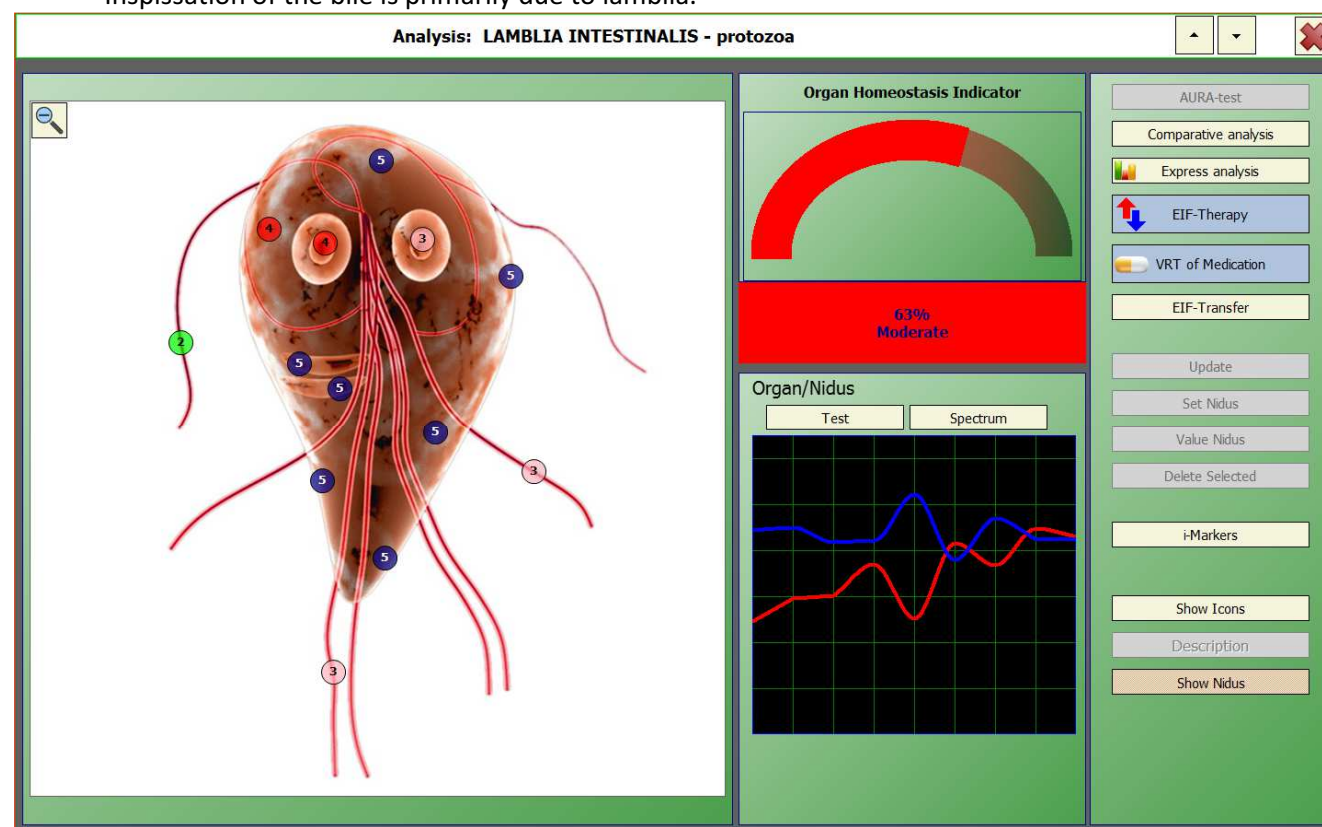
We analyze the gallbladder for microorganisms for carrying out EIF-therapy.



Inflammatory process in the gallbladder is primarily due to haemolytic streptococcus.

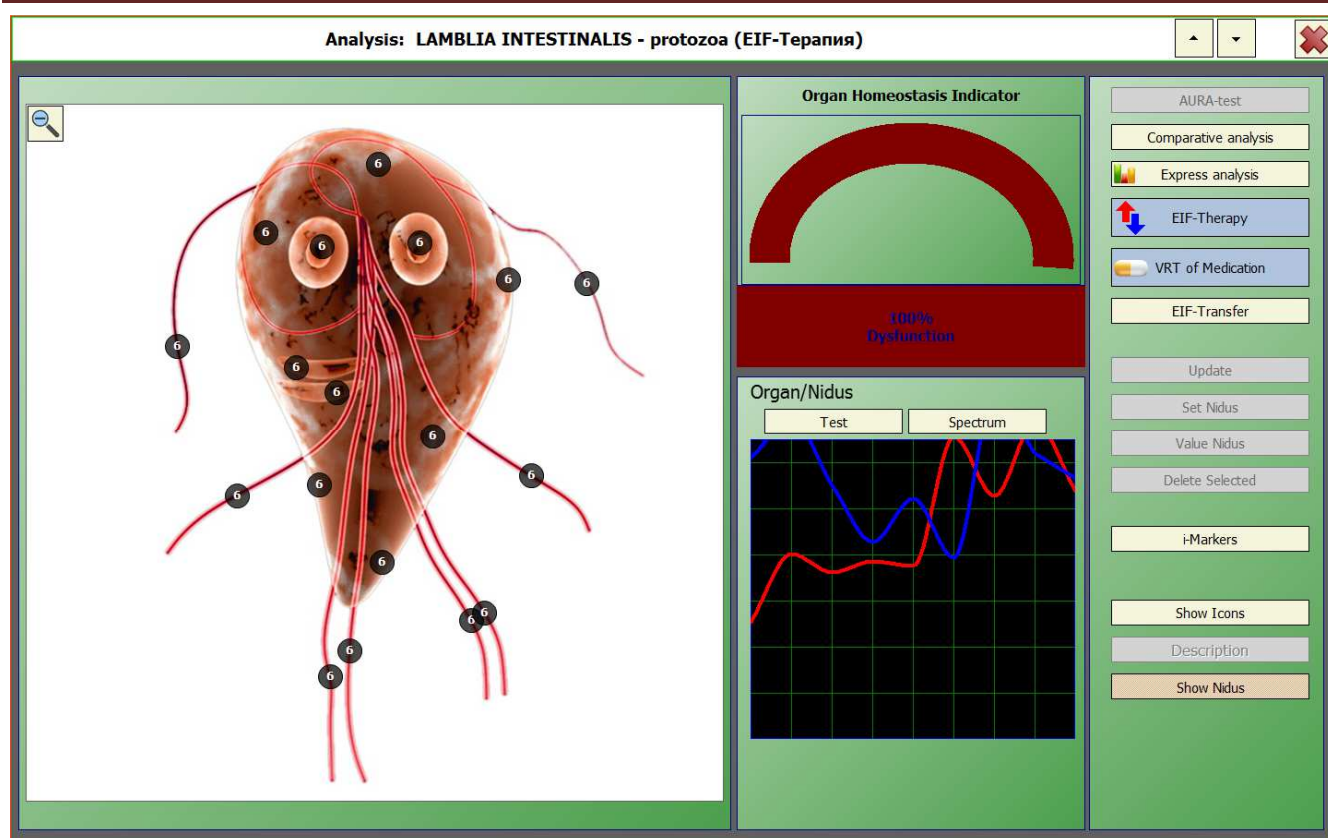


Inspissation of the bile is primarily due to lamblia.



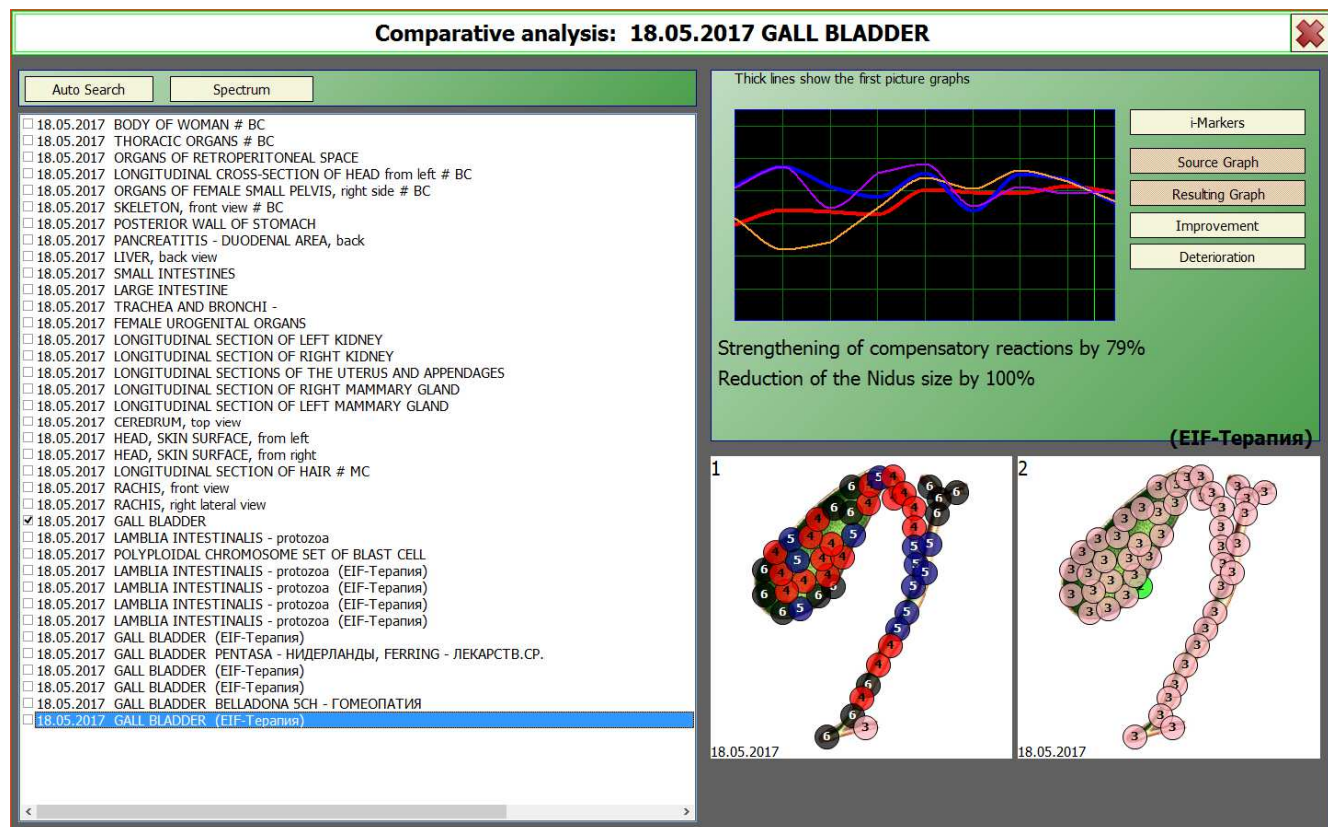
We add the lamblia to the study program, record the frequency state of the lamblia population in the human body, then carry out EIF-therapy to suppress the vital activity of LAMBLIA INTESTINALIS starting out from the obtained frequencies and EIF-therapy to improve the functional state of the gallbladder, normalizing homeostasis and, as a result, metabolism.

After EIF-Therapy with Destructor influence Lamblia Intestinalis have Dysfunction condition and disbalanced Homeostasis:



Conclusion

After the treatment, including EIF-therapy, carried out for 10 days, antiparasitic treatment with nemazol and therapy using BFB on the Dianel-Ion device, a clinical improvement was obtained (90% of patients had no complaints of pain in the side to the right, appetite increased, general condition improved) and improvement in the survey data on the Dianel-2, Dianel-Ion and Dianel-Micro devices.



Etalons for GALL BLADDER (EIF-Терапия)

Clear Select Groups

- ☐ AA - STANDARDS OF HEALTHY TISSUES
- ☐ AB - BIOCHEMICAL HOMEOSTASIS
- ☐ AC - PATHOMORPHOLOGICAL AND NOSOLOGICAL FORMS
- ☒ AD - MICROORGANISMS AND HELMINTHS
- ☐ AE - ALLERGENS
- ☐ AF - MEDICINES
- ☐ AG - PHYTOTHERAPY
- ☐ AL - ANAESTHESIA
- ☐ AL - IMPLANT MATERIALS
- ☐ AL - INTERNATIONAL CLASSIFICATION OF DISEASES (ICD-10 GUIDE)
- ☐ AL - MICROELEMENTS

Spectrum

Object

Etalon

List of Etalons descending spectral similarity

Fix Rows Sort Filter

0	0.0000	GALL BLADDER
0	1.0670	OPTIMAL DISTRIBUTION
X 0		VIRTUAL MODEL
0	0.3549	TOXOPLASMA GONDII LIVER - Protozoa
0	0.4782	ASPERGILLUS FUMIGATUS - Funguses
0	0.5048	ASPERGILLUS NIGER - Funguses
0	0.5303	STRONGYLOIDES STERCORALIS ADULT - Helminths
0	0.7452	ANCILOSTOMA BRAZILIENSE - Helminths
0	0.7920	CANDIDA ALBICANS - Funguses STI
0	1.0431	HUMAN IMMUNODEFICIENCY VIRUS - Viruses: STI
0	1.0742	TRICHINELLA SPIRALIS - Helminths
0	1.1611	STAPHYLOCOCCUS AUREUS - Bacteria
0	1.1905	PROTEUS VULGARIS - Bacteria
0	1.2027	OPISTHORHIS FELINEUS - Helminths
0	1.2572	SALMONELLA PARATYPHI B - Bacteria
0	1.2913	ESCHERICHIA COLI - Bacteria
0	1.4218	STREPTOCOCCUS BOVIS D - Bacteria
0	1.4656	STREPTOCOCCUS AGALACTIA B - Bacteria
0	1.4771	STREPTOCOCCUS HAEMOLYTICUS A - Bacteria

EIF-Transfer

VRT of Etalon

Open Epicrisis

Pathology Search

Etalon is Object

ENT-Analysis

NLS Analysis

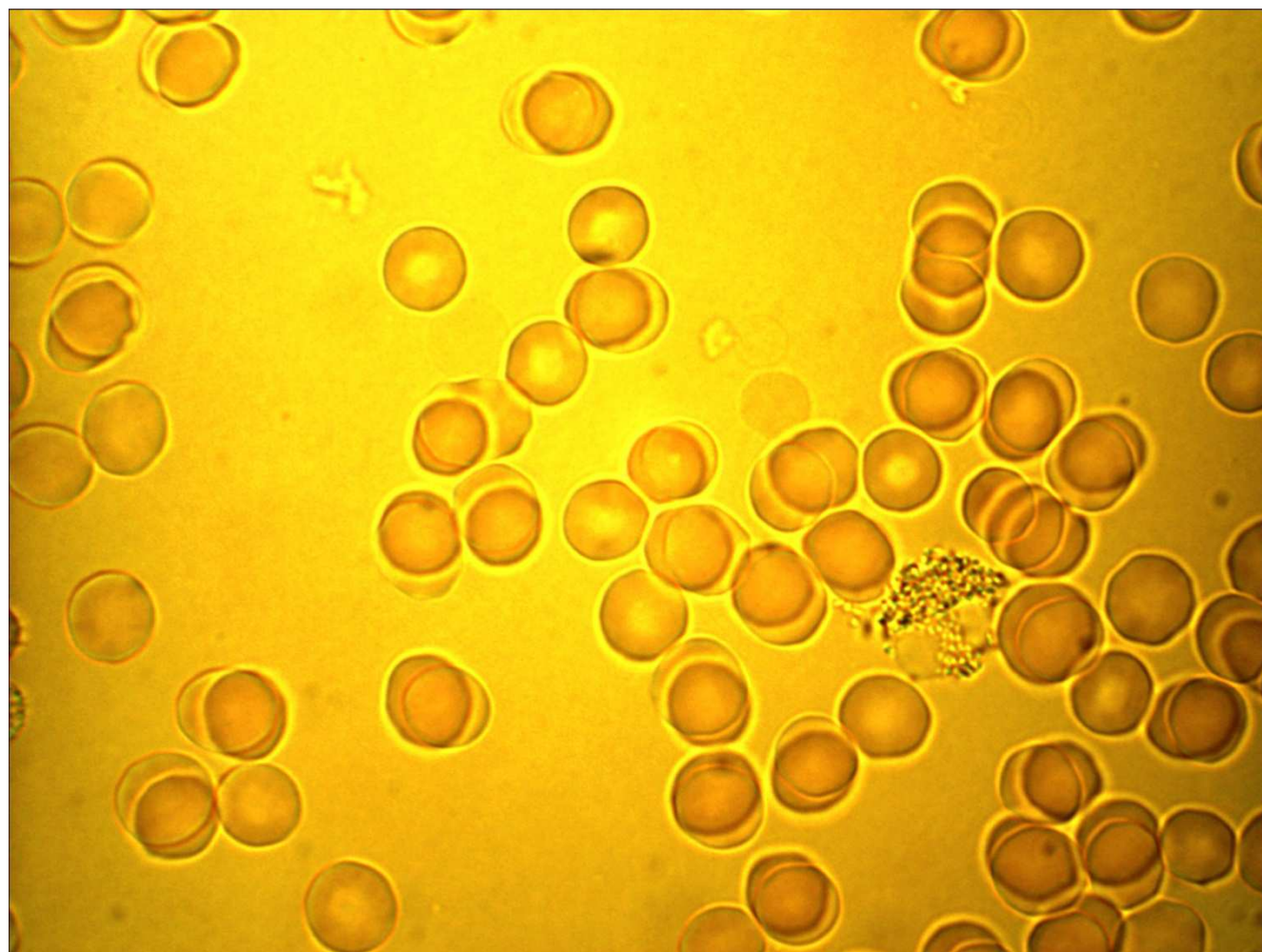
Correction

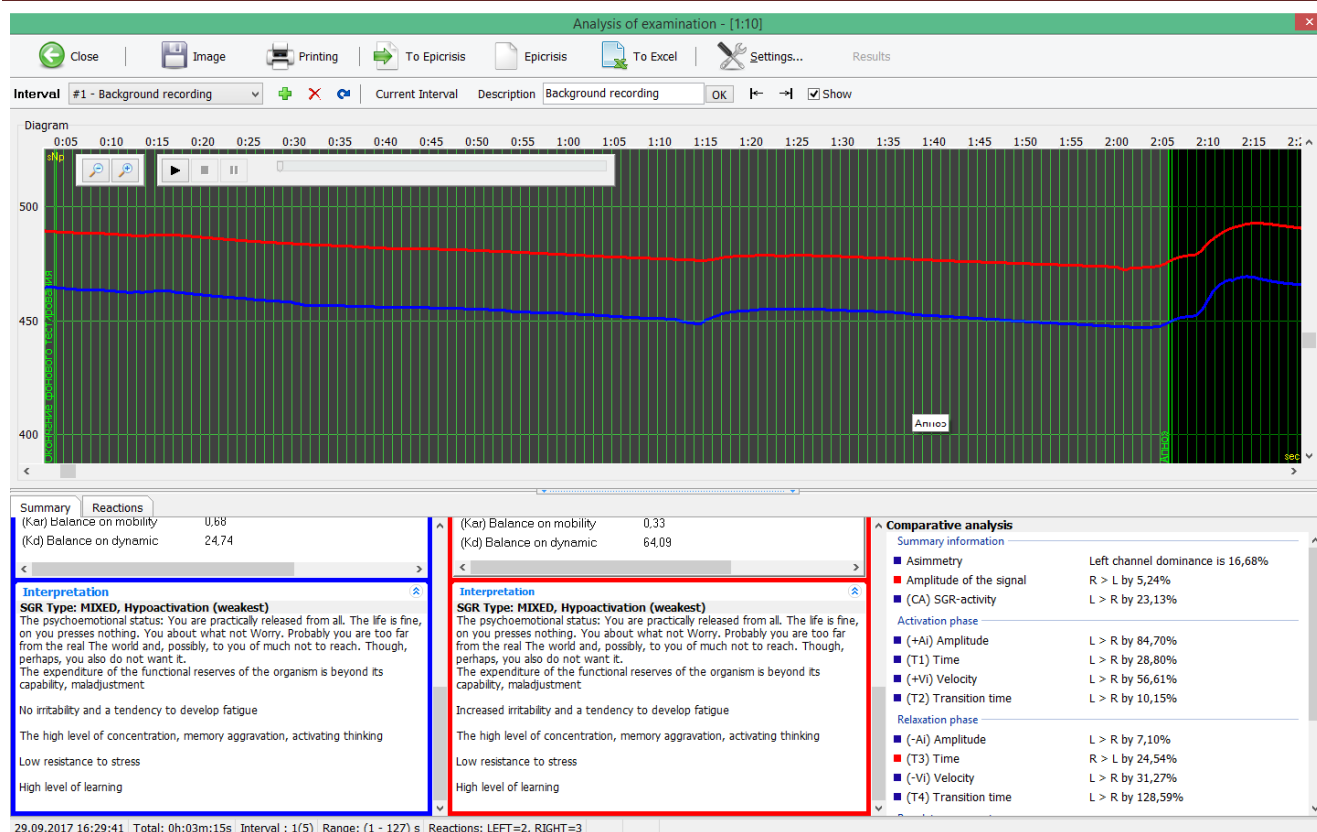
Correction All

Auto Model

Absolute Model

Hidden Pathologies





Thus, combined use of hemoscanning, psychological testing and bioresonance testing and therapy not only extends diagnosis and treatment opportunities, but also confirms the validity and practical feasibility of each of the methods.

Similar directions of alternative medicine find ever-widening applications in practice due to their safety, painlessness and efficiency.

30.08.2017